



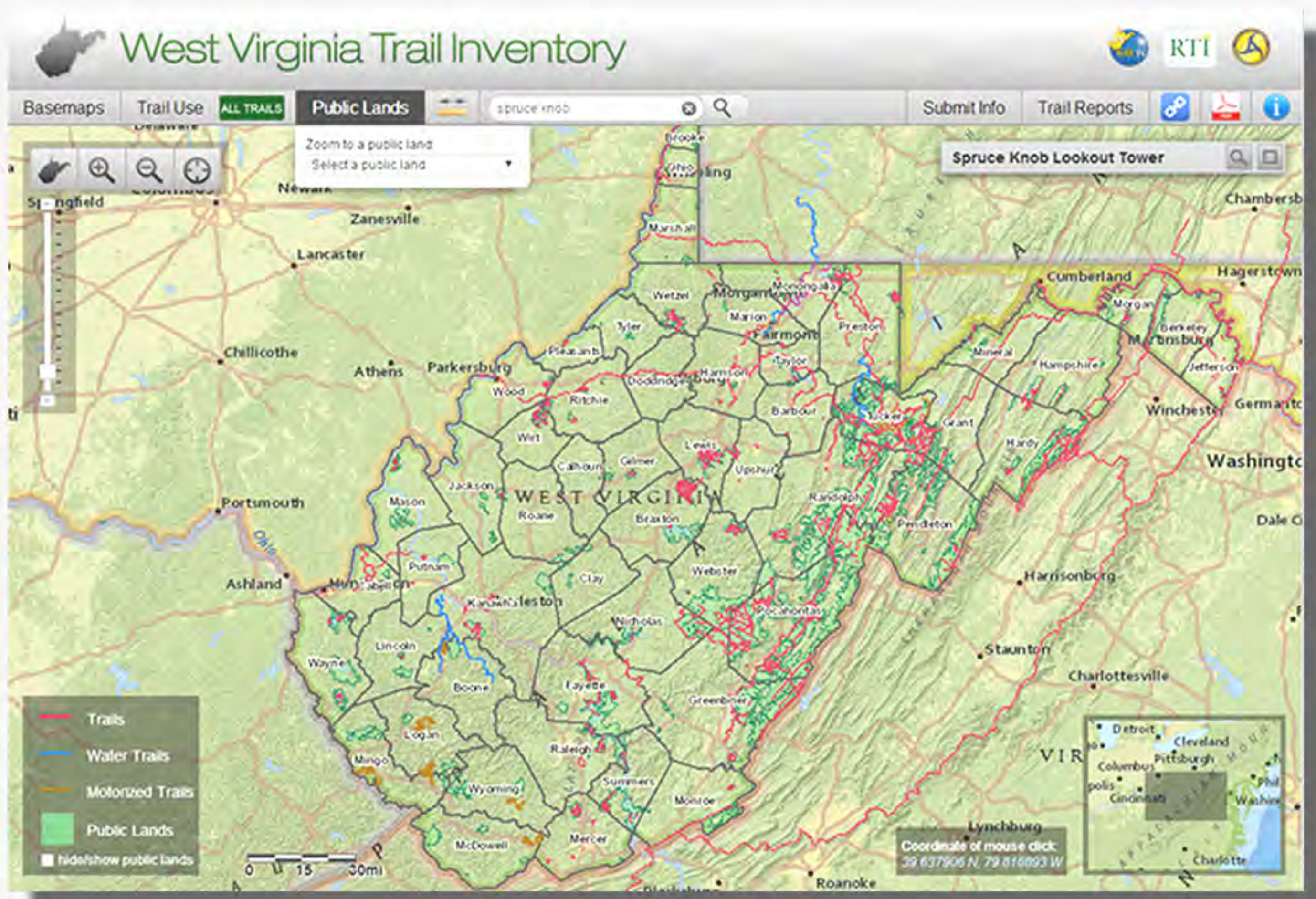
West Virginia Trail Inventory

The *West Virginia Trail Inventory* application allows users to view and identify recreational trails in West Virginia using multiple devices including phones, tablets, or computers.

The *West Virginia Trail Inventory* project is funded by the WV Division of Highways to inventory, collect, and integrate all publicly accessible trails in West Virginia. Currently there are approximately 5,000 miles of inventoried trails in West Virginia.



Desktop & Tablet Application: <http://mapwv.gov/trails>



West Virginia statewide trail inventory

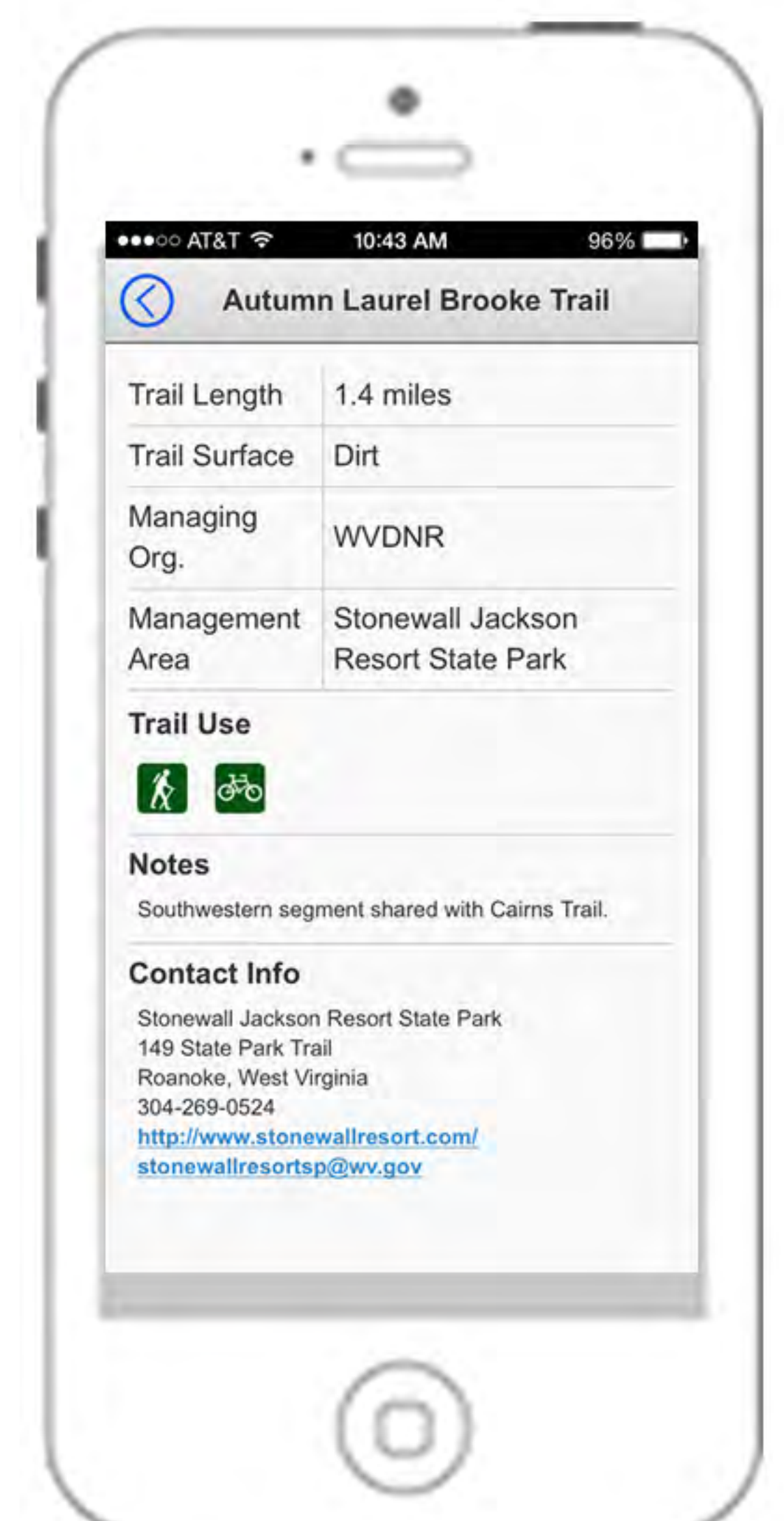
- View trail information
- Print a map or share trail information link
- View elevation profile of selected trail
- Download .GPX and .KML files
- Select from multiple basemaps
- Filter out trails by trail use
- Search by trail name
- Zoom to public lands
- Validate or exchange trail information
- Launch Google Maps

Mobile Application: <http://mapwv.gov/mtrails>

- Geolocation via a device's internal GPS
- Multiple background maps
- Search by trail name
- Trail use information for each trail



Trail map



Trail information



West Virginia Trail Inventory

Desktop & Tablet Application Features

The screenshot shows the West Virginia Trail Inventory web application. At the top, there are navigation tabs for 'Basemaps', 'Trail Use', 'Public Lands', and 'Upper Sheldon'. A search bar is located to the right of these tabs. Below the search bar, there are two filter panels: one for 'ALL TRAILS' with icons for 'Non-motorized' (hiking, mountain biking, horseback riding, etc.) and 'Motorized' (ATV, motorcycle), and another for 'No trails are selected'. A map of the Core Arboretum area is shown with a yellow trail highlighted. A red arrow points to this trail with the label '5. Search trail'. In the bottom right corner, there is a detailed information panel for the 'Upper Sheldon' trail, including its length (0.12 miles), surface (Gravel/Dirt), managing organization (WVU), and contact information for the WVU Core Arboretum. A '9. Elevation Profile' window is open, showing a graph of elevation in feet versus distance in miles. At the bottom right, there are buttons for 'Submit Info', 'Trail Reports', and 'RTI'. A small inset map in the bottom left corner shows the location of the trail within West Virginia, with a callout '8. Launch Google Maps'.

- 1. Change basemap background
- 2. Filter by trail use
- 3. Zoom to public land
- 4. Measure trail distance
- 5. Search for trail

- 6. Submit trail information and view trail report
- 7. Print a map and share information
- 8. Launch Google Earth

- 9. View trail elevation profile
- 10. Download .GPX & .KML files

8. Launch Google Maps

<http://mapwv.gov/trails>